

Domestic Commodity Prices (in Rupees)						Percentage change over		
Items	Unit	26-Nov-15	27-Oct-16	17-Nov-16	24-Nov-16	Previous week	Previous month	Previous year
<b>Weekly SPI Index (Combined)</b>		<b>218.81</b>	<b>220.59</b>	<b>220.70</b>	<b>220.57</b>	<b>-0.1</b>	<b>0.0</b>	<b>0.8</b>
Wheat	10 Kg	350.66	340.78	343.57	344.90	0.4	1.2	-1.6
Wheat Flour Bag Av. Qlt.	10 Kg	396.70	385.23	386.09	386.09	0.0	0.2	-2.7
Rice Basmati Broken	Kg	61.27	62.01	62.01	62.01	0.0	0.0	1.2
Rice Irri-6/9	Kg	45.71	47.97	47.90	47.90	0.0	-0.1	4.8
Mash Pulse Washed	Kg	239.26	249.21	238.62	233.44	-2.2	-6.3	-2.4
Gram Pulse Washed	Kg	123.04	174.53	174.80	171.53	-1.9	-1.7	39.4
Beef	Kg	316.54	324.30	324.30	324.30	0.0	0.0	2.5
Mutton	Kg	625.18	653.91	653.94	653.94	0.0	0.0	4.6
Chicken Live (Farm)	Kg	130.61	164.08	141.11	138.55	-1.8	-15.6	6.1
Egg Hen (Farm)	Doz	99.63	106.27	126.60	130.11	2.8	22.4	30.6
Sugar	Kg	59.63	72.01	72.96	68.91	-5.6	-4.3	15.6
Gur	Kg	88.52	94.63	90.81	88.83	-2.2	-6.1	0.4
Milk Fresh	Ltr	78.04	80.37	80.37	80.37	0.0	0.0	3.0
Veg. Ghee (Tin)	2.5 Kg	448.06	445.41	445.41	446.59	0.3	0.3	-0.3
Cooking Oil (Tin)	2.5 Ltr	457.00	454.65	454.65	454.65	0.0	0.0	-0.5
Tea Packet (Yellow Lable)	200 Gm	189.44	157.90	157.90	159.14	0.8	0.8	-16.0
Kerosene	Ltr	84.31	77.05	77.05	77.05	0.0	0.0	-8.6
Gas Charges Up To 3.3719	Mmbtu	128.70	128.70	128.70	128.70	0.0	0.0	0.0
L.P.G.( 11 Kg Cylinder)	Each	1126.49	1096.76	1209.41	1203.53	-0.5	9.7	6.8
Elec.Chrg. 1-50	Unit	2.00	2.00	2.00	2.00	0.0	0.0	0.0
Petrol	Ltr	77.17	65.13	65.13	65.13	0.0	0.0	-15.6
Diesel	Ltr	84.75	73.45	73.45	73.45	0.0	0.0	-13.3
Urea Sona	50 Kg bag	1920.00	1358.00	1372.00	1368.00	-0.3	0.7	-28.8
DAP	50 Kg bag	3445.00	2569.00	2533.00	2526.00	-0.3	-1.7	-26.7
Cement	50 Kg bag	517.00	543.00	547.00	548.00	0.2	0.9	6.0
Furnace Oil*	Metric ton	35052.00	42342.00	45062.40	45062.40	0.0	6.4	28.6
Cotton <sup>@</sup>	Mand (37.32 Kg)	5485.00	6085.00	6235.00	6285.00	0.8	3.3	14.6
Gold 24 ct <sup>@</sup>	10 Gm	38657.00	44314.00	43885.00	42942.00	-2.1	-3.1	11.1

Source:

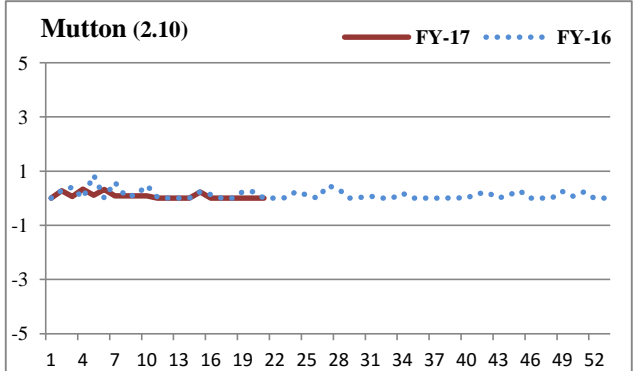
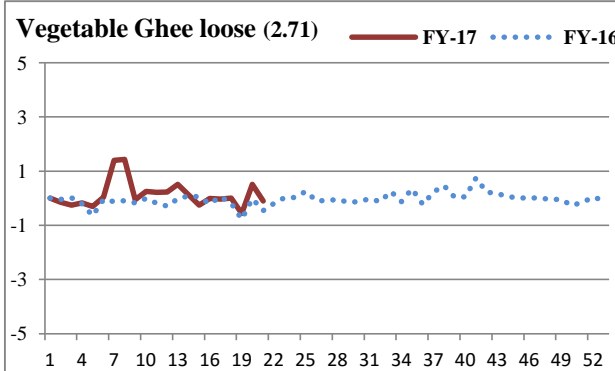
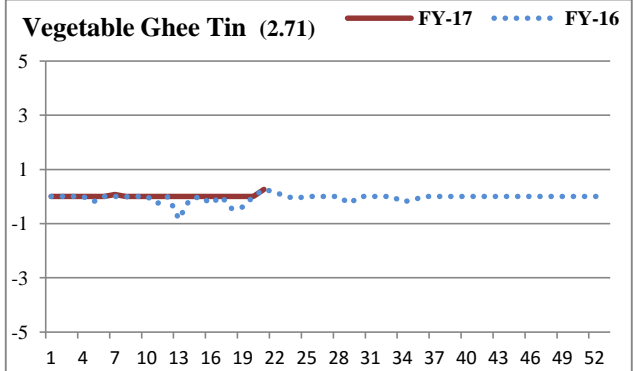
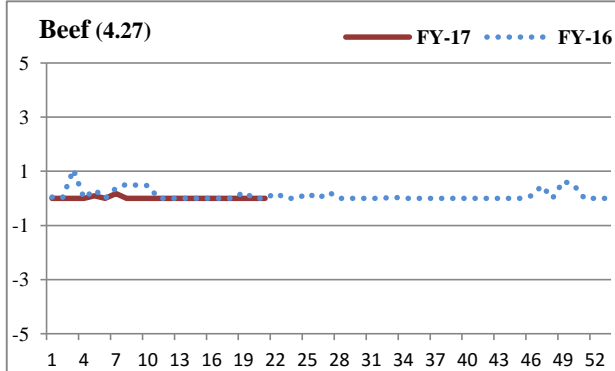
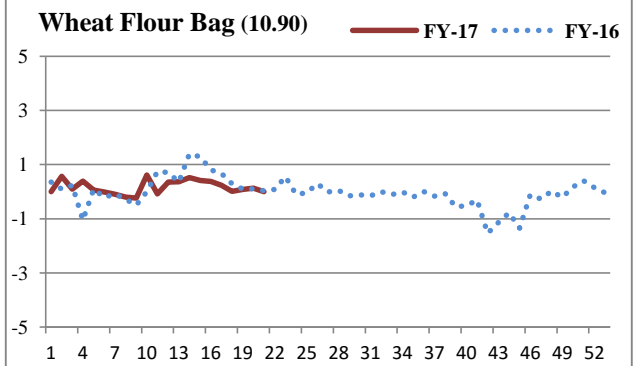
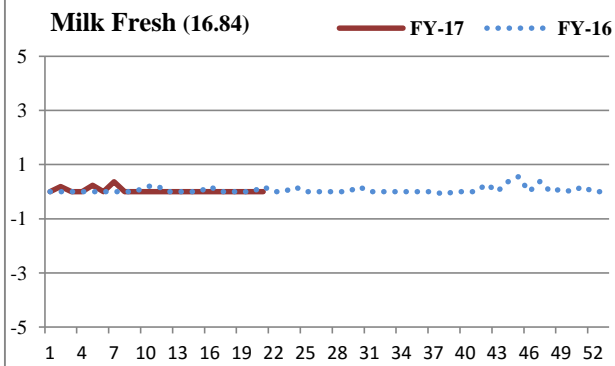
Pakistan Bureau of Statistics

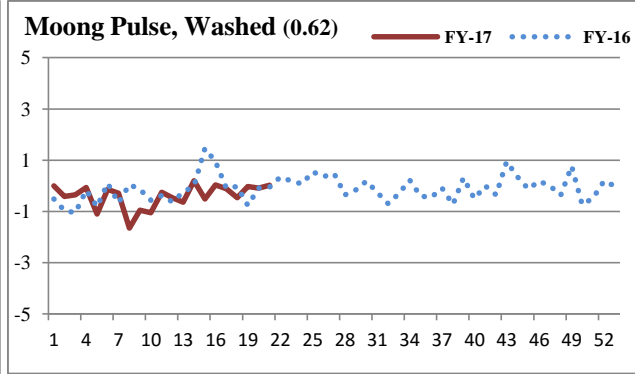
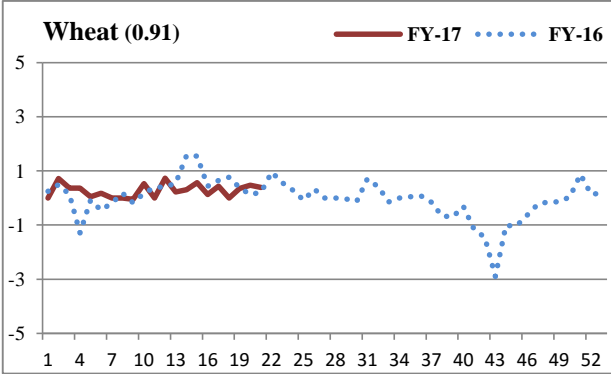
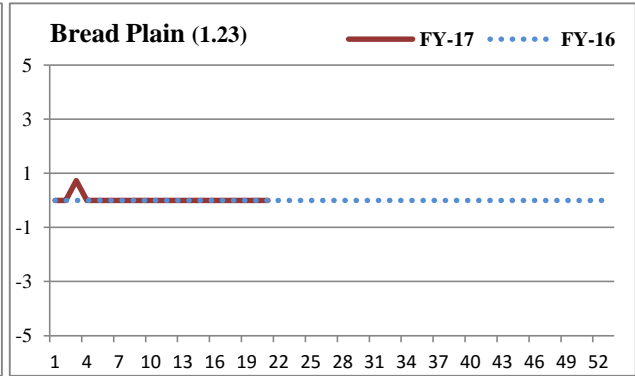
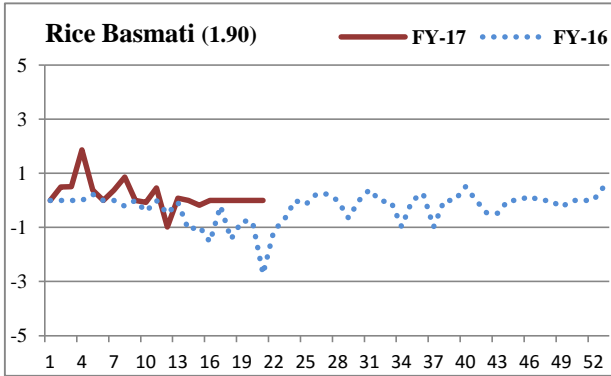
\*Pakistan State Oil ( <http://www.psopk.com/en/product-and-services/product-prices/hsfo> )

<sup>@</sup>Business Recorder ( [www.brecorder.com](http://www.brecorder.com) )

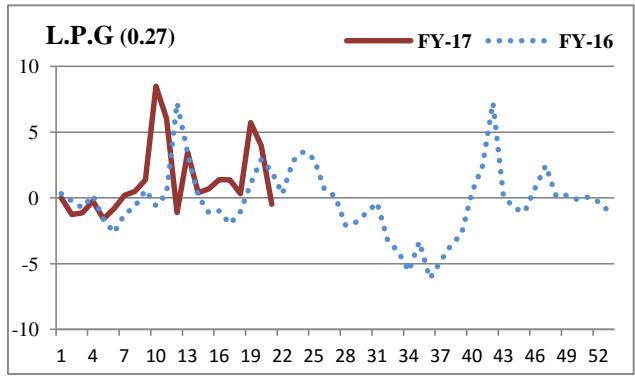
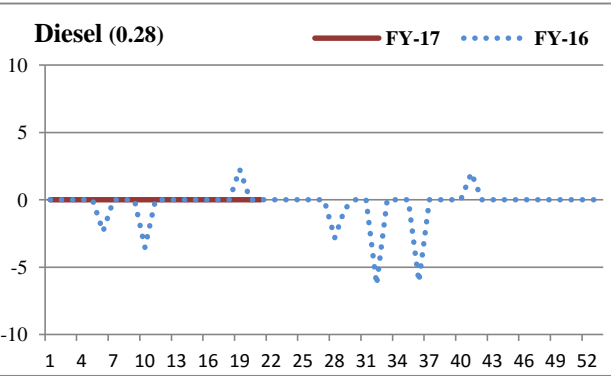
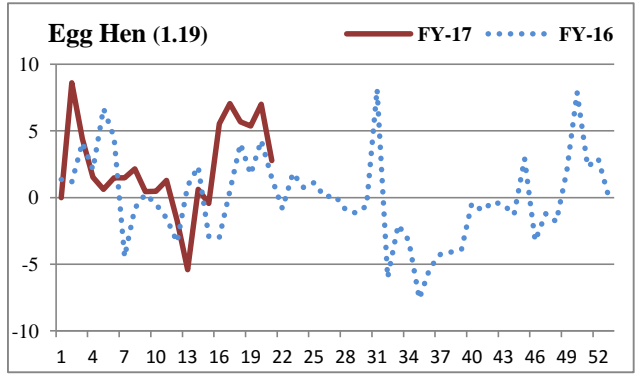
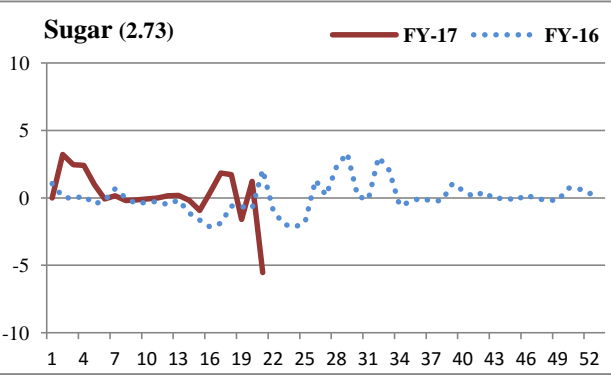
Trend of Top 25 SPI Items (Weight Wise)														
Sr. No.	Item	Unit	Weight	Prices Weekly			YoY% Change			YoY% Change Direction	WoW% Change			WoW% Change Direction
				26-Nov-15	17-Nov-16	24-Nov-16	26-Nov-15	17-Nov-16	24-Nov-16		26-Nov-15	17-Nov-16	24-Nov-16	
1	Milk Fresh	Ltr	16.84	78.04	80.37	80.37	2.33	2.99	2.99	↑	0.00	0.00	0.00	↓
2	Elec.Chrg. 1-50	Unit	11.51	2.00	2.00	2.00	0.00	0.00	0.00	→	0.00	0.00	0.00	→
3	Wheat Flour Bag Av. Qlt.	10 Kg	10.90	396.70	386.09	386.09	-1.46	-2.59	-2.67	↓	0.08	0.13	0.00	↓
4	Petrol	Ltr	5.12	77.17	65.13	65.13	-18.95	-15.60	-15.60	↑	0.00	0.00	0.00	→
5	Beef	Kg	4.27	316.54	324.30	324.30	4.77	2.64	2.45	↓	0.19	0.00	0.00	→
6	Gas Charges Up To 3.3719	Mmbtu	4.12	128.70	128.70	128.70	3.64	0.00	0.00	↓	0.00	0.00	0.00	→
7	Chicken Live (Farm)	Kg	3.56	130.61	141.11	138.55	-16.87	4.19	6.08	↑	-3.57	-1.84	-1.81	↑
8	Sugar	Kg	2.73	59.63	72.96	68.91	5.80	21.20	15.56	↑	-0.95	1.23	-5.55	↓
9	Veg. Ghee (Tin)	2.5 Kg	2.71	448.06	445.41	446.59	-12.25	-0.42	-0.33	↑	0.17	0.00	0.26	↑
10	Veg.Ghee Loose	Kg	2.71	136.63	142.58	142.43	-13.41	4.15	4.25	↑	-0.20	0.51	-0.11	↓
11	Cooking Oil (Tin)	2.5 Ltr	2.30	457.00	454.65	454.65	-14.67	-0.24	-0.51	↑	0.27	0.00	0.00	→
12	Tea Packet (Yellow Lable)	200 Gm	2.15	189.44	157.90	159.14	48.37	-16.65	-15.99	↓	0.00	0.00	0.79	↑
13	Mutton	Kg	2.10	625.18	653.94	653.94	5.39	4.60	4.60	↓	0.00	0.00	0.00	↓
14	Rice Basmati Broken	Kg	1.90	61.27	62.01	62.01	-17.70	0.08	1.21	↑	-1.11	0.00	0.00	↓
15	Long Cloth (Coarse Latha)	Mtr	1.85	202.77	205.57	205.57	1.62	1.38	1.38	↓	0.00	0.00	0.00	→
16	Cigarettes K-2	20'S	1.59	54.76	64.76	64.76	20.59	18.26	18.26	↓	0.00	0.90	0.00	↓
17	Lawn	Mtr	1.47	243.03	251.21	251.21	1.62	3.37	3.37	↑	0.00	0.00	0.00	→
18	Onions	Kg	1.42	62.22	29.20	28.41	139.22	-55.08	-54.34	↓	-4.28	-0.41	-2.71	↓
19	Bananas	Doz	1.39	58.99	62.70	62.90	-2.75	5.97	6.63	↑	-0.30	-0.54	0.32	↑
20	Curd	Kg	1.35	92.17	94.05	94.05	2.89	2.04	2.04	↓	0.00	0.00	0.00	↓
21	Tele. Local Call	Each	1.31	3.94	3.94	3.94	0.00	0.00	0.00	→	0.00	0.00	0.00	→
22	Potatoes	Kg	1.25	32.75	42.47	42.26	-37.81	27.77	29.04	↑	-1.47	-0.59	-0.49	↑
23	Bread Plain Mid.Size (340-400 Gm)	Each	1.23	40.82	41.12	41.12	0.00	0.73	0.73	↑	0.00	0.00	0.00	→
24	Egg Hen (Farm)	Doz	1.19	99.63	126.60	130.11	-14.70	26.02	30.59	↑	-0.83	7.00	2.77	↓
25	Tomatoes	Kg	1.18	68.97	48.99	57.85	39.42	-34.96	-16.12	↓	-8.43	1.96	18.09	↑

## Weekly Trend in Major SPI Items ( -5 to +5)%

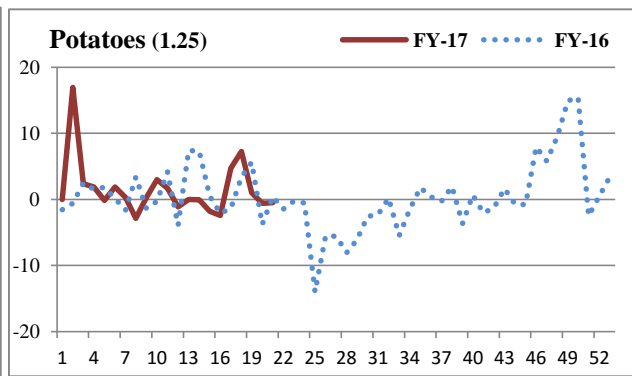
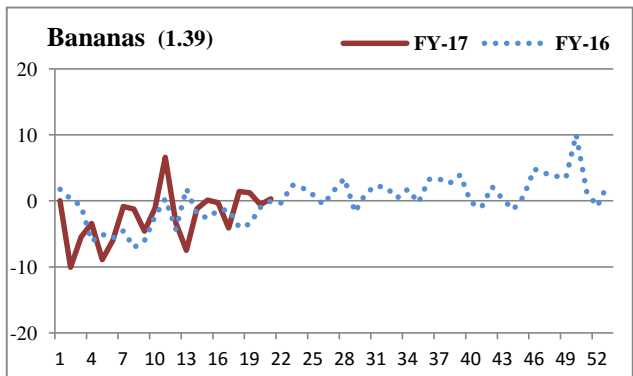
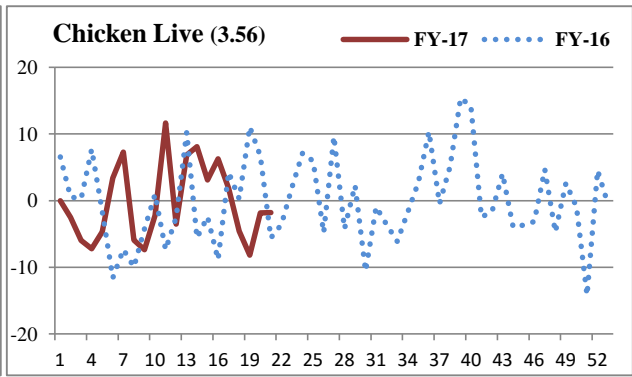
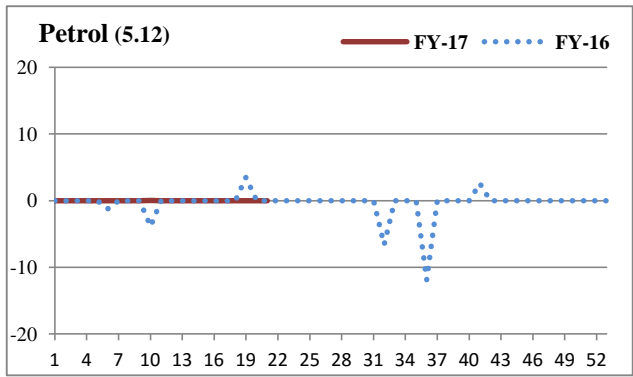




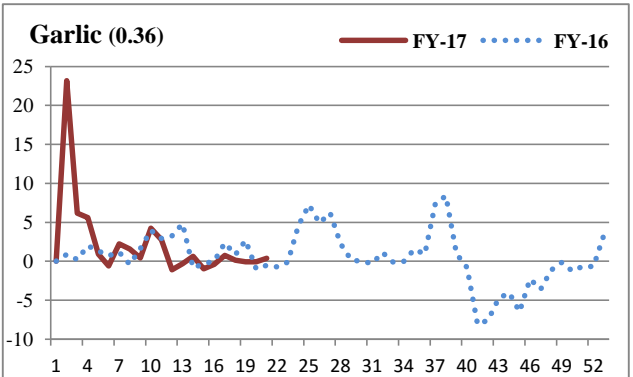
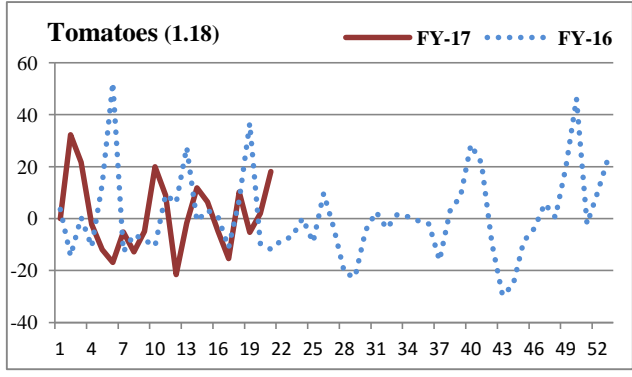
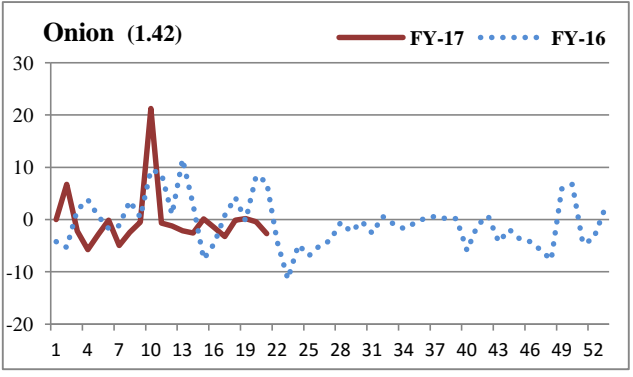
**Weekly Trend in Major SPI Items ( -10 to +10)%**



## Weekly Trend in Major SPI Items ( -20 to +20)%



## Weekly Trend in Major SPI Items ( Beyond ± 20%)



Global Commodity Indices and Prices						Percentage change over		
Items	Unit	27-Nov-15	28-Oct-16	18-Nov-16	25-Nov-16	Previous week	Previous month	Previous year
<b>S&amp;P GSCI Commodity Index*</b>		<b>337.3</b>	<b>370.0</b>	<b>359.7</b>	<b>365.1</b>	<b>1.5</b>	<b>-1.3</b>	<b>8.3</b>
<b>Bloomberg Commodity Index (BCOM)**</b>		<b>81.1</b>	<b>85.9</b>	<b>83.0</b>	<b>85.0</b>	<b>2.4</b>	<b>-1.0</b>	<b>4.9</b>
<b>Energy (S&amp;P Index)</b>		<b>146.6</b>	<b>167.6</b>	<b>158.4</b>	<b>159.9</b>	<b>0.9</b>	<b>-4.6</b>	<b>9.1</b>
<b>Crude Oil (S&amp;P Index)</b>		<b>228.6</b>	<b>266.9</b>	<b>254.1</b>	<b>252.4</b>	<b>-0.6</b>	<b>-5.4</b>	<b>10.4</b>
NYMEX WTI (Jan 17)	US\$/barrel	41.7	49.3	46.4	46.1	-0.6	-6.6	10.4
ICE Brent (Jan 17)	US\$/barrel	44.9	50.7	46.9	47.2	0.8	-6.8	5.3
Dubai Spot (Index)	US\$/barrel	40.3	46.7	42.5	45.2	6.3	-3.3	12.2
Arab Light Spot Asia (Index)	US\$/barrel	38.7	46.6	42.1	44.9	6.8	-3.6	16.0
<b>Coal (DJ US Total Market Index)</b>		<b>18.5</b>	<b>41.6</b>	<b>45.6</b>	<b>48.5</b>	<b>6.5</b>	<b>16.6</b>	<b>162.6</b>
Coal (US)	US\$/MT	46.3	44.0	44.0	44.0	0.0	0.0	-4.9
<b>Natural Gas (S&amp;P Index)</b>		<b>103.6</b>	<b>145.4</b>	<b>139.5</b>	<b>149.9</b>	<b>7.4</b>	<b>3.1</b>	<b>44.8</b>
Natural Gas (Dec 16)	US\$/MMBTU	2.2	3.1	2.8	3.1	8.5	-0.6	39.5
<b>Industrial metals (S&amp;P Index)</b>		<b>244.5</b>	<b>285.5</b>	<b>301.1</b>	<b>323.2</b>	<b>7.3</b>	<b>13.2</b>	<b>32.2</b>
Aluminum (LME, 3m future)	US\$/MT	1457.5	1719.0	1694.0	1757.0	3.7	2.2	20.5
Copper (LME, 3m future)	US\$/MT	4573.0	4843.0	5423.0	5879.0	8.4	21.4	28.6
Lead (LME, 3m future)	US\$/MT	1617.0	2065.0	2140.0	2391.5	11.8	15.8	47.9
Nickel (LME, 3m future)	US\$/MT	8775.0	10430.0	10845.0	11560.0	6.6	10.8	31.7
Tin (LME, 3m future)	US\$/MT	15000.0	20650.0	20200.0	20925.0	3.6	1.3	39.5
Zinc (LME, 3m future)	US\$/MT	1549.0	2396.5	2540.0	2819.0	11.0	17.6	82.0
HR Coil Steel US (Nov 16)	US\$/MT	376.0	492.0	510.0	510.0	0.0	3.7	35.6
<b>Precious metals (S&amp;P Index)</b>		<b>1383.1</b>	<b>1685.7</b>	<b>1597.8</b>	<b>1560.2</b>	<b>-2.4</b>	<b>-7.4</b>	<b>12.8</b>
Gold (Spot)	US\$/Troy Ounce	1057.4	1275.5	1207.9	1183.9	-2.0	-7.2	12.0
Platinum (Spot)	US\$/Troy Ounce	835.8	980.5	923.0	908.3	-1.6	-7.4	8.7
Silver (Spot)	US\$/Troy Ounce	14.1	17.8	16.6	16.5	-0.2	-6.9	17.2
<b>Agriculture (S&amp;P Index)</b>		<b>286.6</b>	<b>303.2</b>	<b>299.2</b>	<b>300.6</b>	<b>0.4</b>	<b>-0.9</b>	<b>4.9</b>
Cotton (NYB-ICE, Dec 16)	US cents/pounds	62.6	70.8	73.4	72.7	-1.0	2.6	16.0
Sugar (LIF, Mar 17)	US\$/MT	330.0	488.5	444.2	437.4	-1.5	-10.5	32.5
Corn (CBOT, Dec 16)	US\$/MT	141.4	139.8	136.0	137.5	1.1	-1.6	-2.8
Rice (CBOT, Jan 17)	US\$/MT	263.6	223.9	212.5	212.2	-0.1	-5.2	-19.5
Wheat (CBOT, Dec 16)	US\$/MT	171.1	150.1	149.9	145.4	-3.0	-3.1	-15.0
Soybeans (CBOT, Jan 17)	US\$/MT	320.7	371.8	365.1	384.3	5.3	3.4	19.8
Palm oil (Bursa Malaysia, Aug 16)	US\$/MT	505.6	623.6	595.8	587.1	-1.5	-5.8	16.1
Tea (BP1 Best, Kenya)	US\$/Kg	3.9	3.7	3.9	4.0	2.1	6.9	2.6
<b>Others</b>								
Urea Granular (US Gulf)	US\$/MT	232.0	206.0	235.0	240.0	2.1	16.5	3.4
DAP (US Gulf)	US\$/MT	415.0	330.0	325.0	325.0	0.0	-1.5	-21.7

**Source: Bloomberg**

LME: London Metal Exchange, CBOT: Chicago Board of Trade, NYMEX : New York Mercantile Exchange, DJ:Dow Jones

\* The S&P GSCI(standard&poor's Goldman sachs commodity Index ) is widely recognized as a leading measure of general price movements and inflation in the world economy.

It provides investors with a reliable and publicly available benchmark for investment performance in the commodity markets.

\*\*Bloomberg Commodity Index(BCOM) reflects commodity futures price movements

